

RantCell User QoE test report

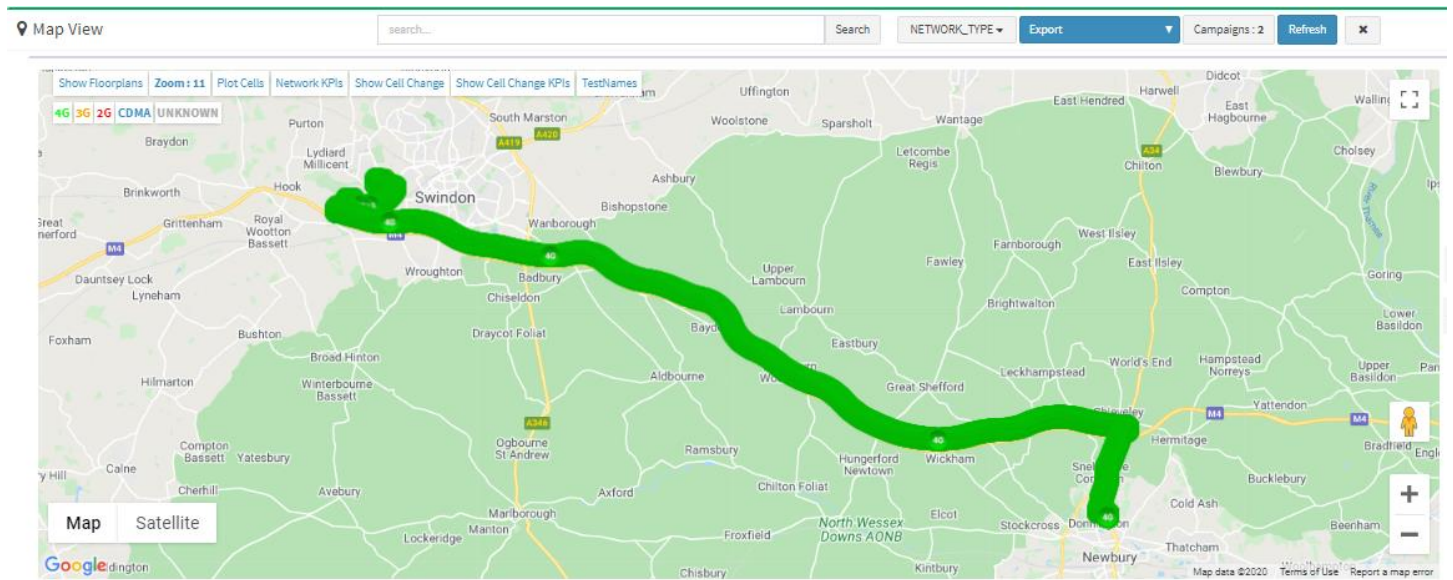


Operator Name	EE UK 234-30
Operator Name	Vodafone UK 234-15
Test Phone Model	Samsung S9 on EE UK 234-30
Test Phone Model	Samsung S8 on Vodafone UK 234-15
Test Start Time	13/05/2019 17:20:35
Test End Time	13/05/2019 18:05:00
Latency test	Yes (35 test iterations)
Speed test	Yes (35 test iterations)
Voice call test	No
HTTP test	No
SMS test	No
Video testing	No



User perceived mobile network coverage during tests

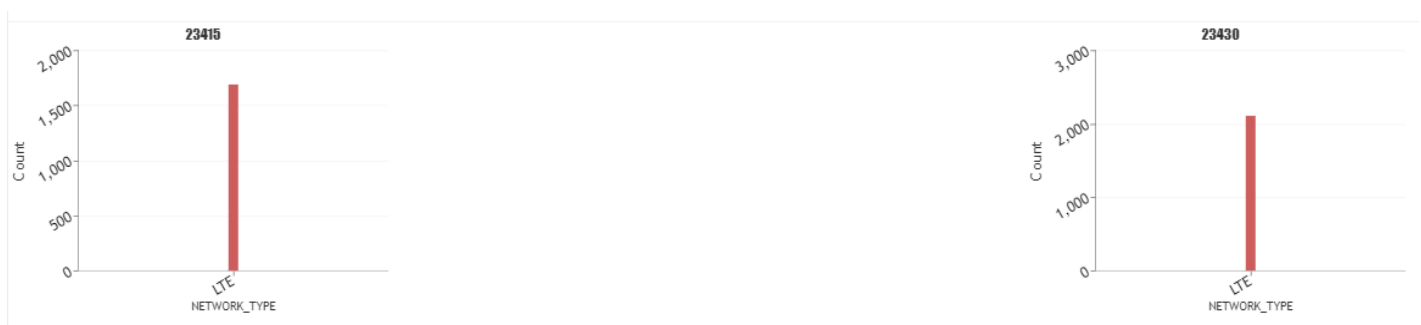
Combined mobile network RAN technology view for EE 234-30, Vodafone UK 234-15



RAN technology statistics per mobile network operator

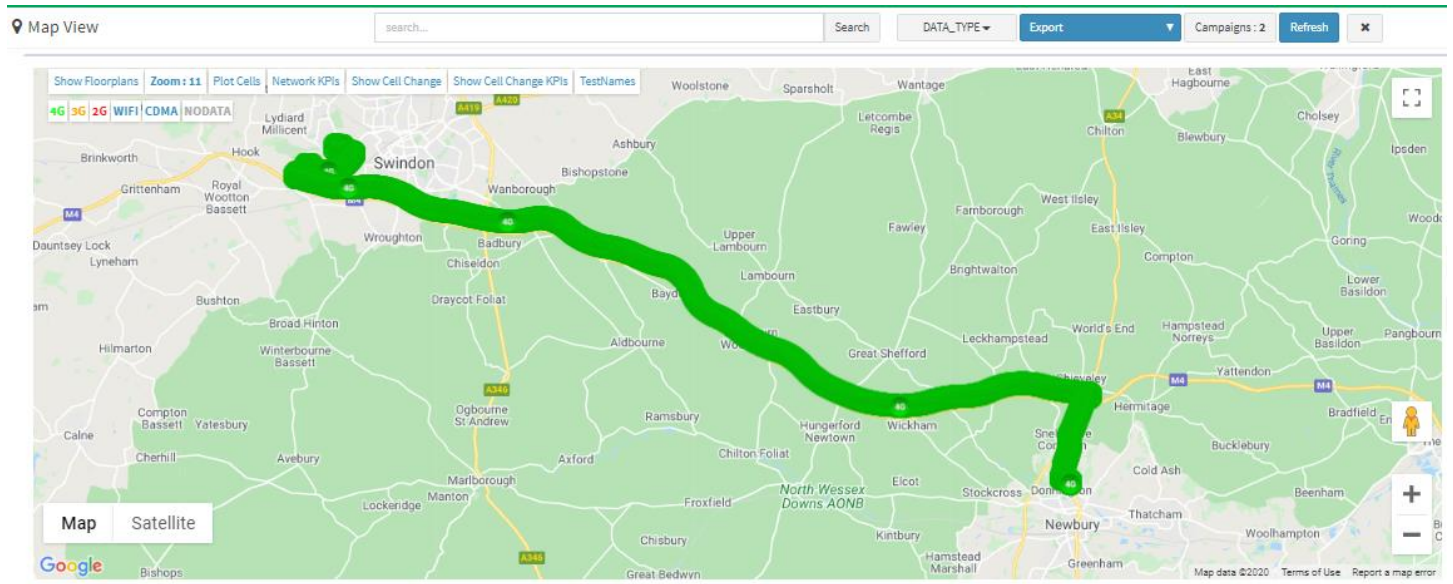
Network Type	23430	23415
4G	100.00%	100.00%
3G	0.00%	0.00%
2G	0.00%	0.00%
CDMA	0.00%	0.00%
UNKNOWN	0.00%	0.00%
Total Geo samples	2113	1693

RAN technology distribution chart per mobile network operator





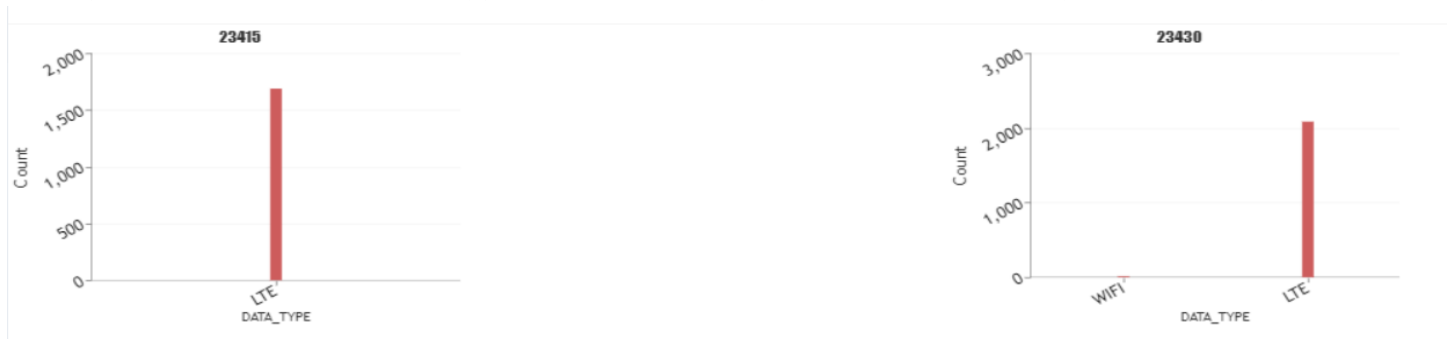
Combined mobile Network Data connectivity for EE 234-30, Vodafone UK 234-15



User perceived RAN technology data connectivity statistics per Mobile network operator

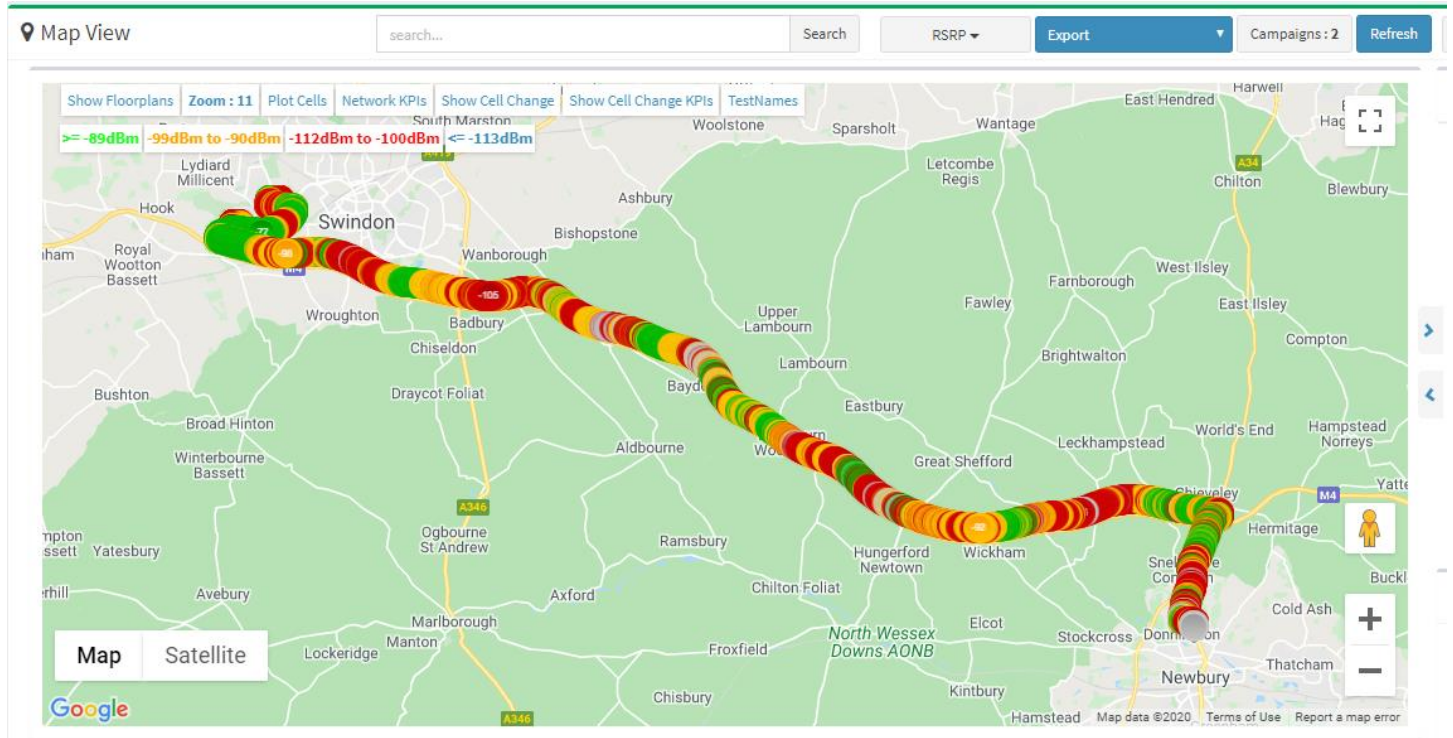
Data Type	23430	23415
4G	98.96%	100.00%
3G	0.00%	0.00%
2G	0.00%	0.00%
CDMA	0.00%	0.00%
WIFI	1.04%	0.00%
NODATA	0.00%	0.00%
Total Geo samples	2113	1693

User perceived RAN technology data connectivity distribution chart per mobile operator





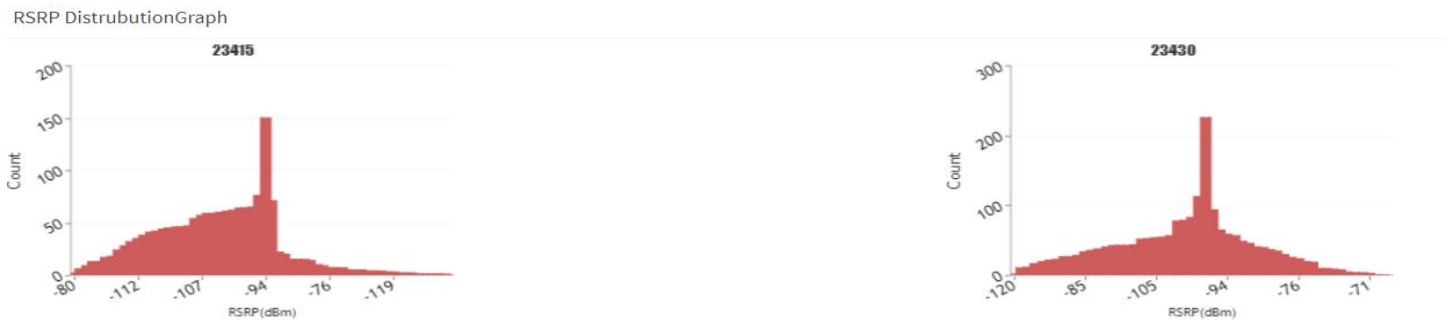
Combined RSRP view for EE 234-30, Vodafone UK 234-15



RSRP KPI statistics per mobile operator

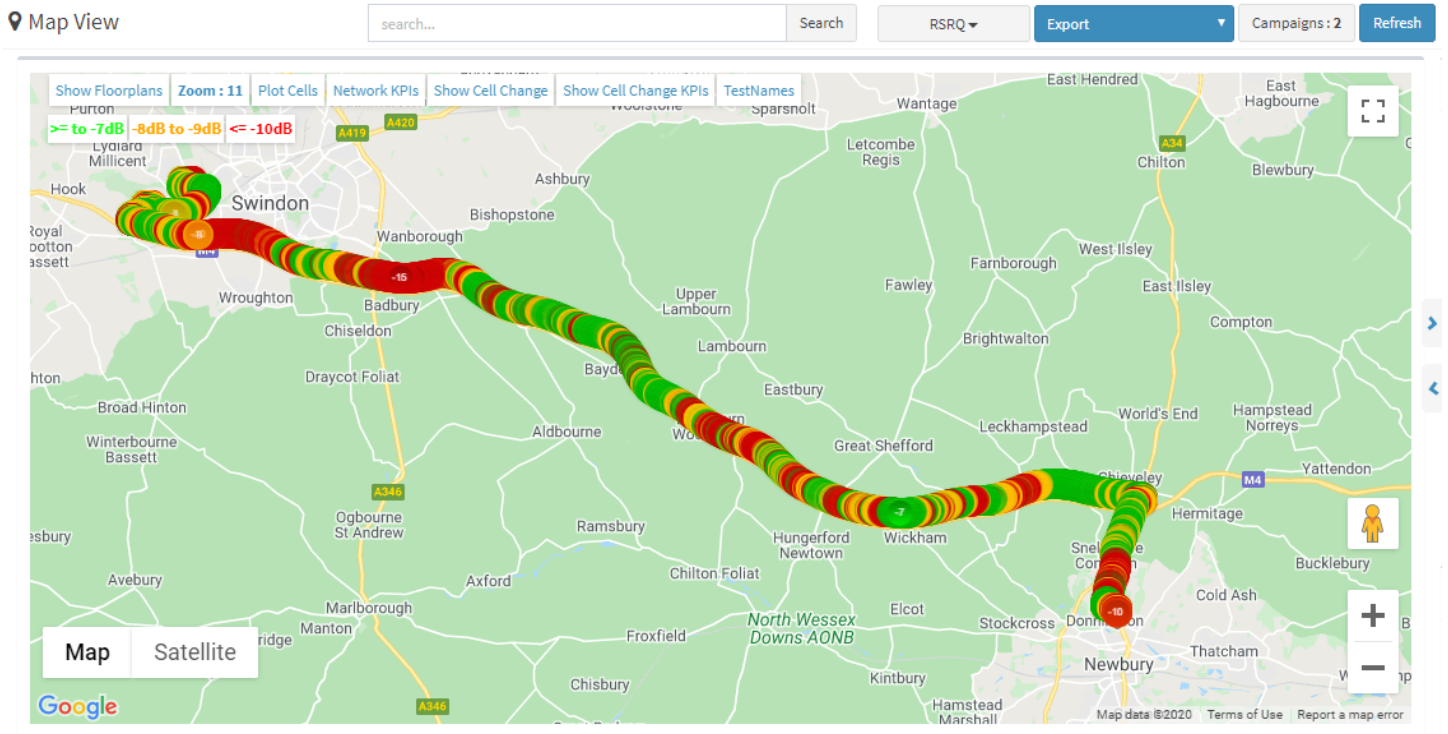
RSRP	23430	23415
>= to -89dBm	25.41 % (count : 537)	19.55 % (count : 331)
B/w -99dBm to -90dBm	27.97 % (count : 591)	37.68 % (count : 638)
B/w -112dBm to -100dBm	42.55 % (count : 899)	39.22 % (count : 664)
<= -113dBm	4.07 % (count : 86)	3.54 % (count : 60)
Total Geo samples	2113	1693

RSRP distribution chart per mobile operator





Combined RSRQ view for EE 234-30, Vodafone UK 234-15

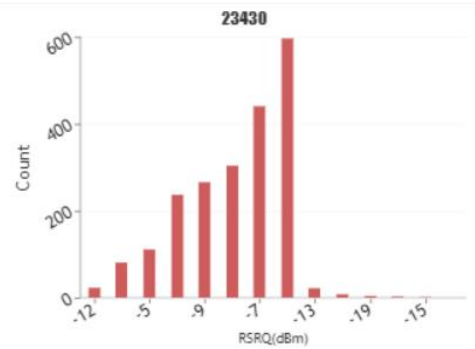
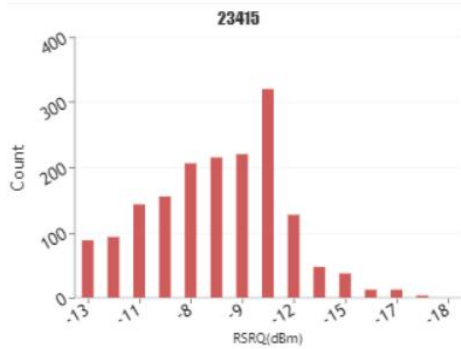


RSRQ KPI statistics

RSRQ	23430	23415
>= to -7dB	54.57 % (count : 1153)	37.51 % (count : 635)
B/w -8dB to -9dB	27.07 % (count : 572)	25.28 % (count : 428)
<= -10dB	18.36 % (count : 388)	37.21 % (count : 630)
Total Geo samples	2113	1693

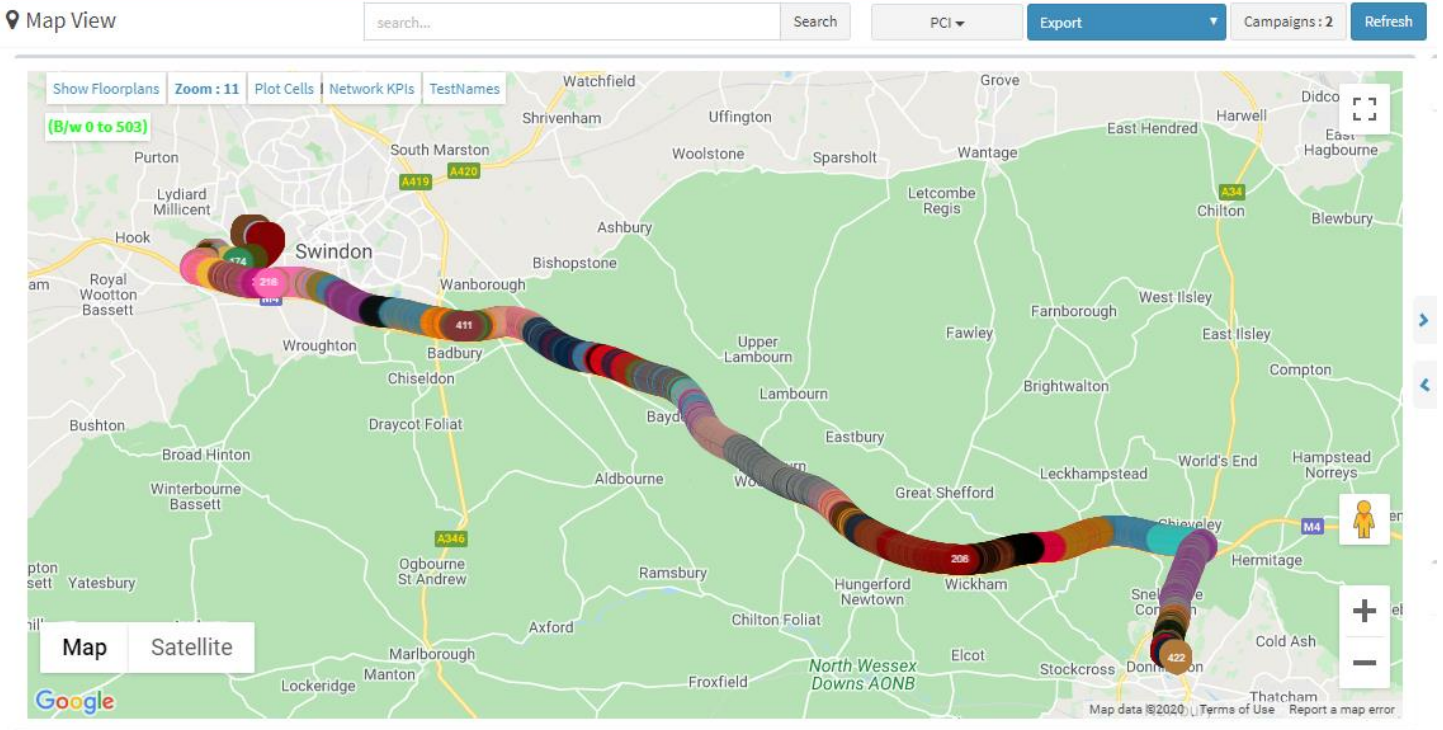
RSRQ Distribution Graph per operator

RSRQ DistrubutionGraph



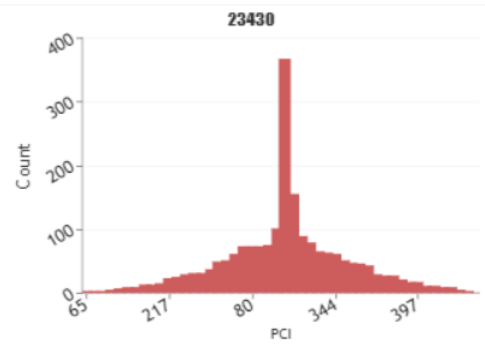
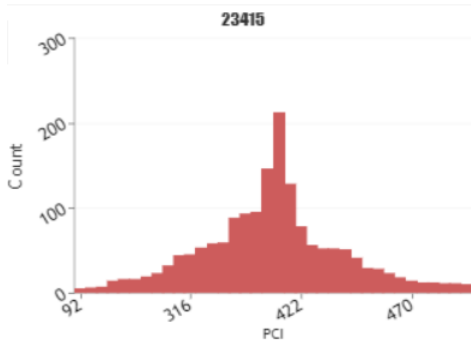


Combined coverage Map PCI view for EE 234-30, Vodafone UK 234-15



PCI distribution graph per mobile operator

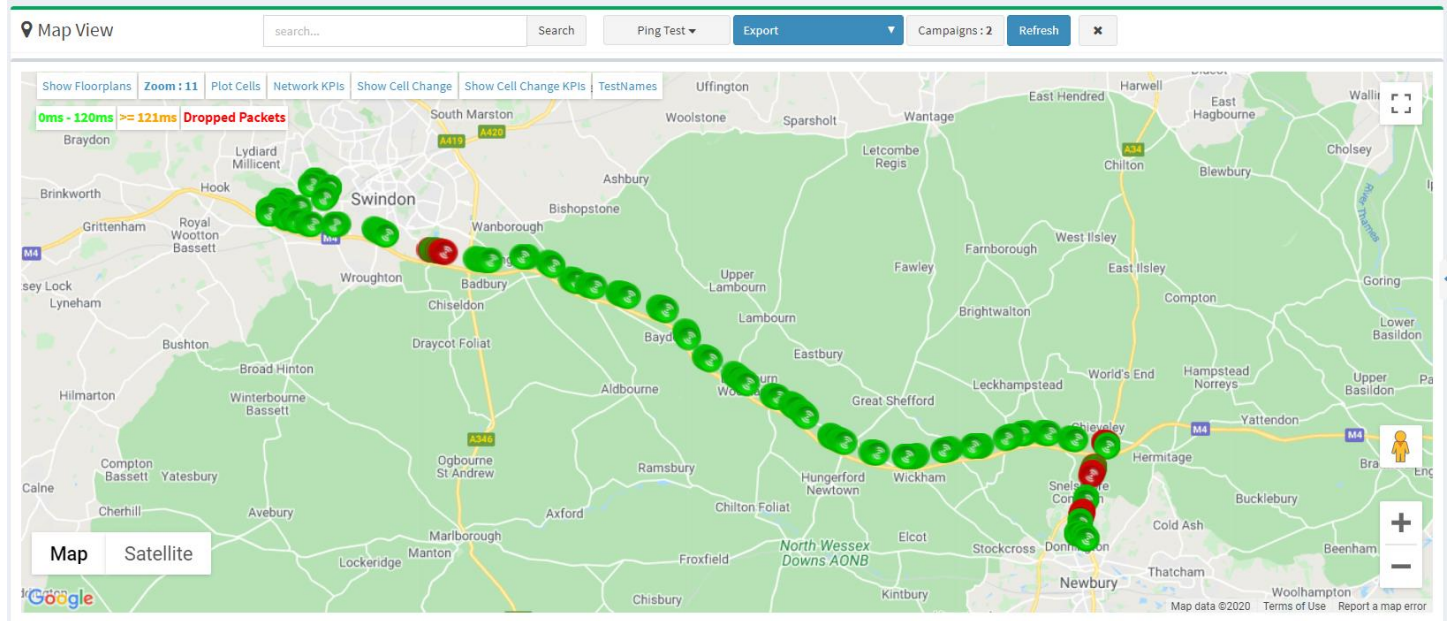
PCI DistributionGraph





Latency testing report

Combined Latency test view (Ping Test) Mobile Operators 234-30, 234-15

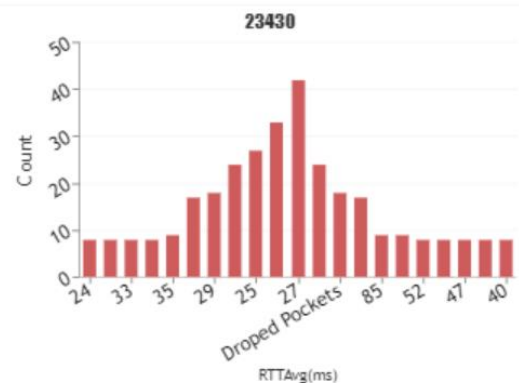
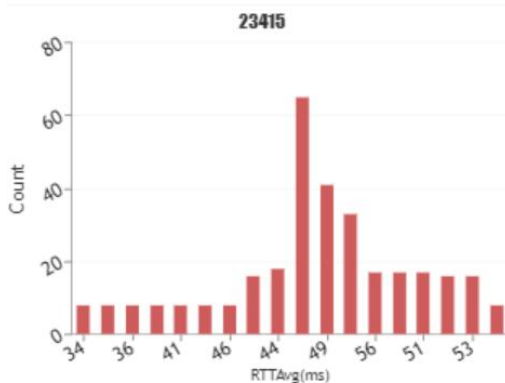


Latency KPI statistics per mobile operator

Latency	23430	23415
0ms - 120ms	94.36 % (count : 301)	79.69 % (count : 255)
>= 121ms	0 % (count : 0)	0 % (count : 0)
Dropped Packets	5.64 % (count : 18)	20.31 % (count : 65)
Highest Latency (ms)	143	69
Lowest Latency (ms)	19	24
Total Geo samples	319	320

Latency distribution graph per mobile operator

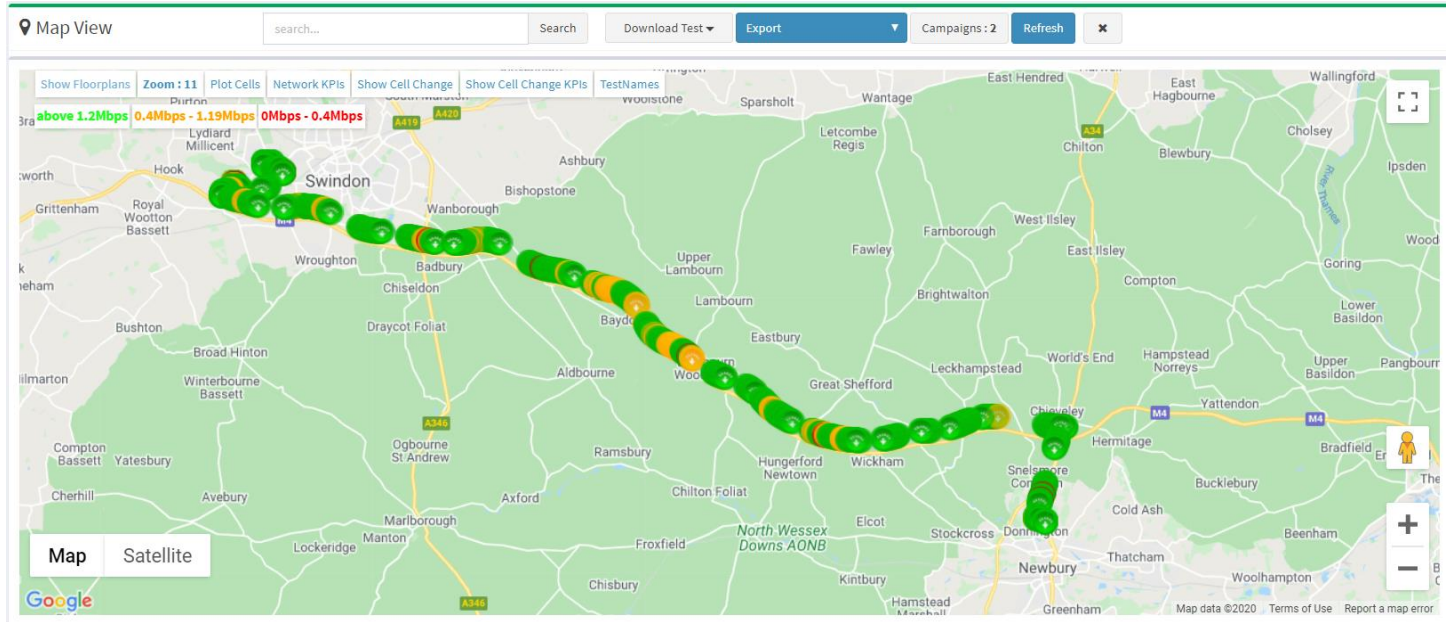
Latency DistrubutionGraph





Download speed test report

Combined Download speed test view of mobile operators 234-30,234-15

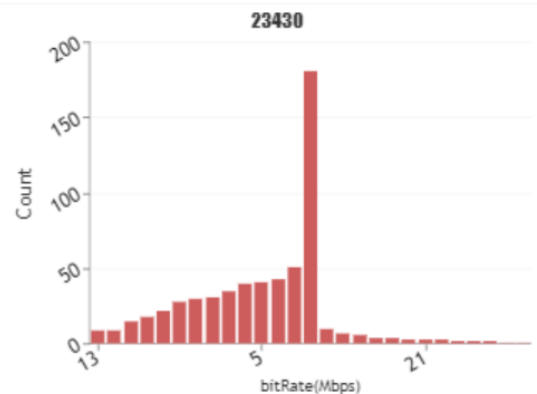
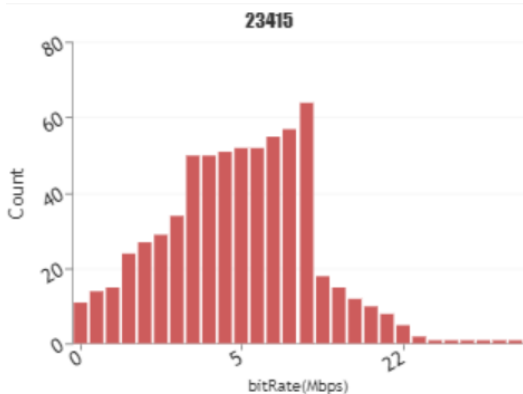


Download test KPI statistics per mobile operator

Download Speed	23430	23415
above 1.2Mbps	73.38 % (count : 441)	94.86 % (count : 627)
0.4Mbps - 1.19Mbps	24.13 % (count : 145)	3.78 % (count : 25)
0Mbps - 0.4Mbps	2.50 % (count : 15)	1.36 % (count : 9)
Average (mbps)	5.2241	7.5766
Peak Speed (mbps)	36.76	31.41
Lowest Recorded (mbps)	0	0
Total Geo samples	601	661

Download test distribution chart per mobile operator

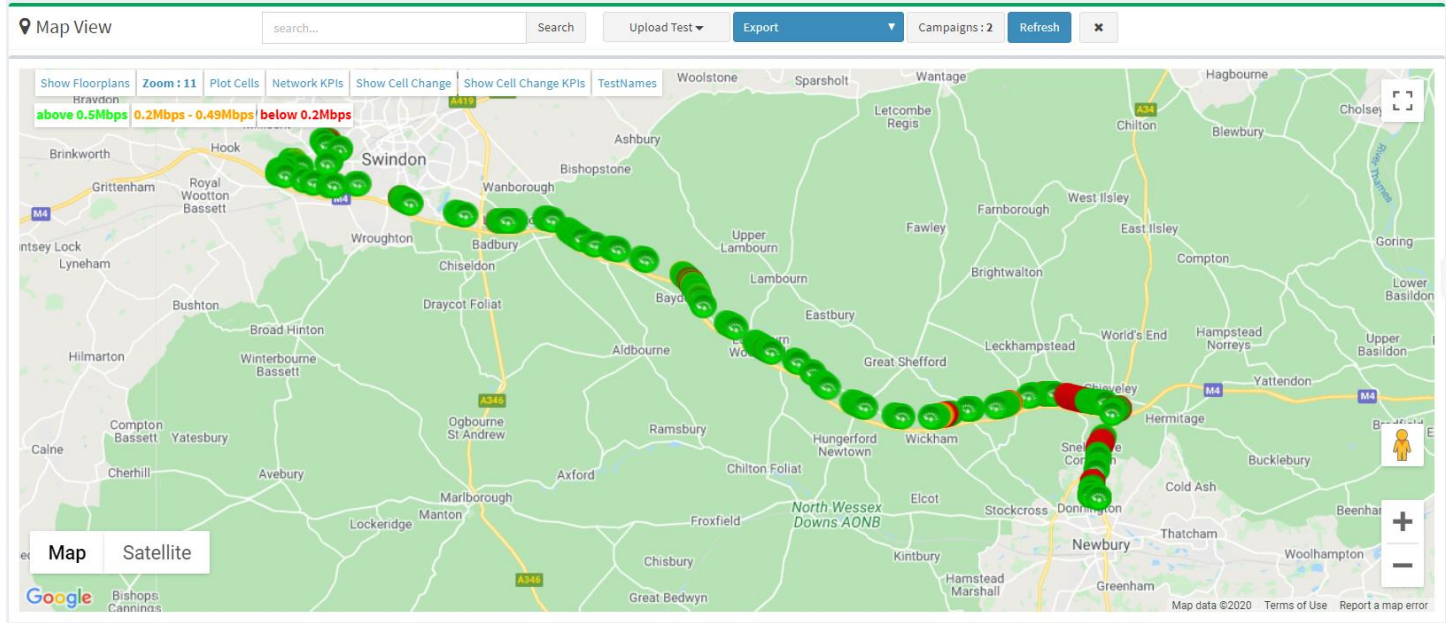
DownloadTest DistrubutionGraph





Upload speed test report

Combined Upload speed test view of Mobile operators 234-30,234-15



Upload test KPI statistics per mobile operator

Upload Speed	23430	23415
above 0.5Mbps	86.92 % (count : 319)	73.42 % (count : 290)
0.2Mbps - 0.49Mbps	2.18 % (count : 8)	0.76 % (count : 3)
below 0.19Mbps	10.90 % (count : 40)	25.82 % (count : 102)
Average (mbps)	5.8163	5.2635
Peak Speed (mbps)	26.28	24.1
Lowest Recorded (mbps)	0	0
Total Geo samples	367	395

Download test distribution chart per mobile operator

UploadTest DistrubutionGraph

